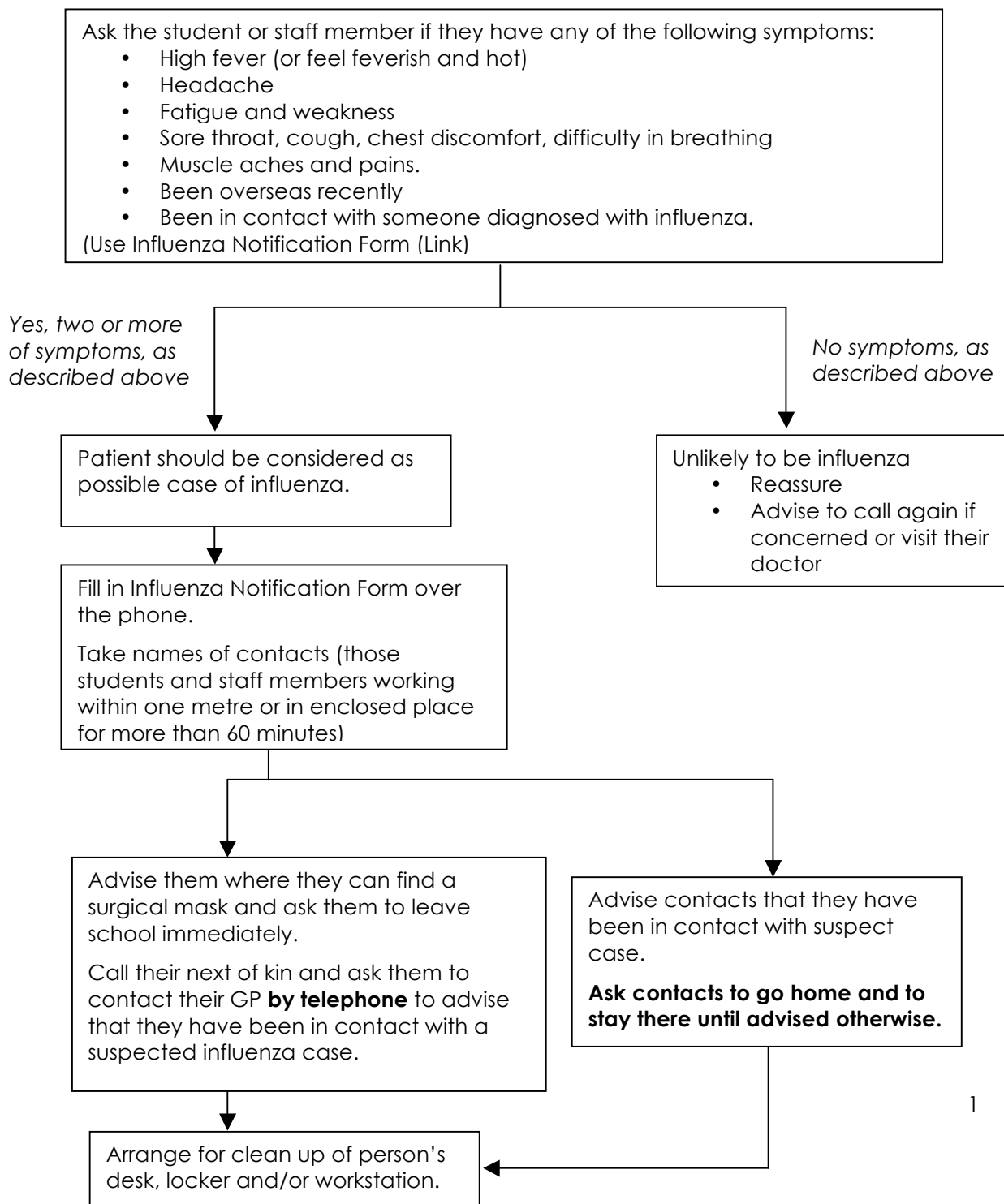


Screening Checklist for detection of Pandemic Influenza cases

Process

- 1) The Pandemic Manager receives a call from a student or staff member suspecting they may have influenza
- 2) Do not visit the person if this can be avoided – manage the process over the telephone
- 3) Follow the flowchart below

N:B Symptoms may change so please refer to the Ministry of Health website.



The Difference between the Influenza and a Common Cold

SYMPTOM	INFLUENZA	COMMON COLD
Fever	Usual, sudden onset 38°-40° and lasts 3-4 days.	Rare
Headache	Usual and can be severe	Rare
Aches and pains	Usual and can be severe	Rare
Fatigue and weakness	Usual and can last 2-3 weeks or more after the acute illness	Sometimes, but mild
Debilitating fatigue	Usual, early onset can be severe	Rare
Nausea, vomiting, diarrhoea	In children over 5 years	Rare
Watering of the eyes	Rare	Usual
Runny, stuffy nose	Rare	Usual
Sneezing	Rare in early stages	Usual
Sore throat	Usual	Usual
Chest discomfort	Usual and can be severe	Sometimes, but mild to moderate
Complications	Respiratory failure; can worsen a current chronic condition; can be life threatening	Congestion or ear-ache
Fatalities	Well recognised	Not reported
Prevention	Influenza vaccine; frequent hand-washing; cover your cough	Frequent hand-washing, cover your cough